

# Performance Benchmarking

## Meet the Metric. Set the Standard.

Passport's Performance Benchmarking solution enables cities to leverage data from other peer cities and unlock their own insights.

The data available assists in goal setting, comparing outcomes and analyzing trends to drive policy change and facilitate collaboration on an ongoing basis. By understanding the metrics, this data-driven approach allows municipalities to make more informed decisions, optimize parking resources and enhance their parking and mobility operations.

### Core Benefits



#### Understand Market Trends

Collect and analyze data to identify current challenges and trends



#### Facilitate Communication

Network effectively with elected officials and the public to optimize parking resources



#### Make Data-Informed Decisions

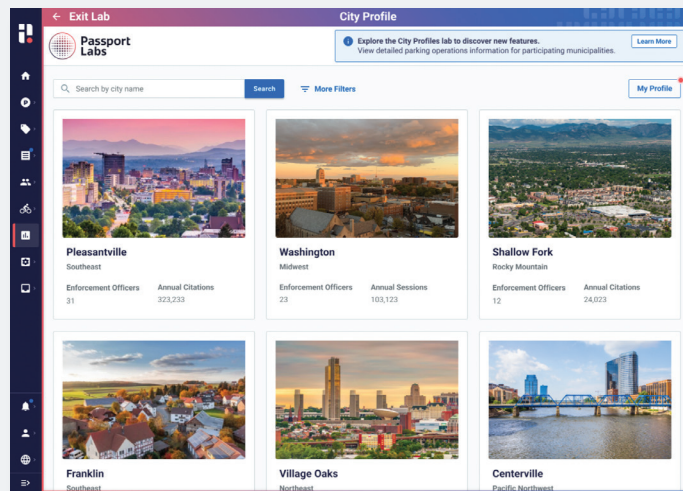
Adapt and implement effective parking solutions tailored to your specific needs and operations

# City Profiles

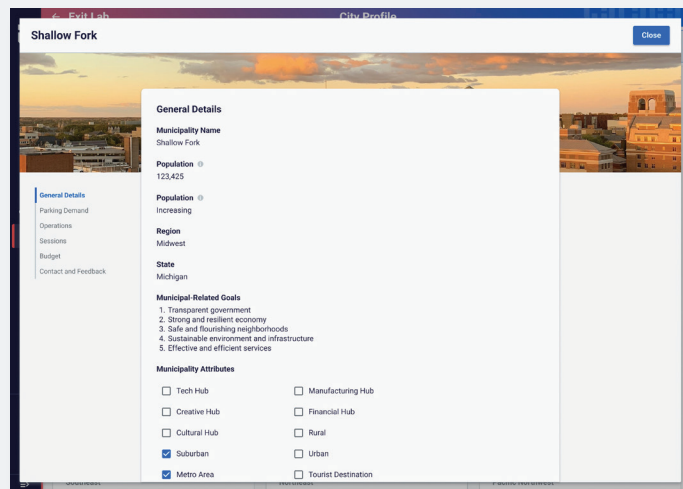
Passport's City Profiles works with Performance Benchmarking to help capture the information needed from cities and aid in like-for-like comparisons between municipalities. Participating cities are able to opt in and out of data-sharing at any time.

To schedule a live demo, contact us at [sales@passportinc.com](mailto:sales@passportinc.com).

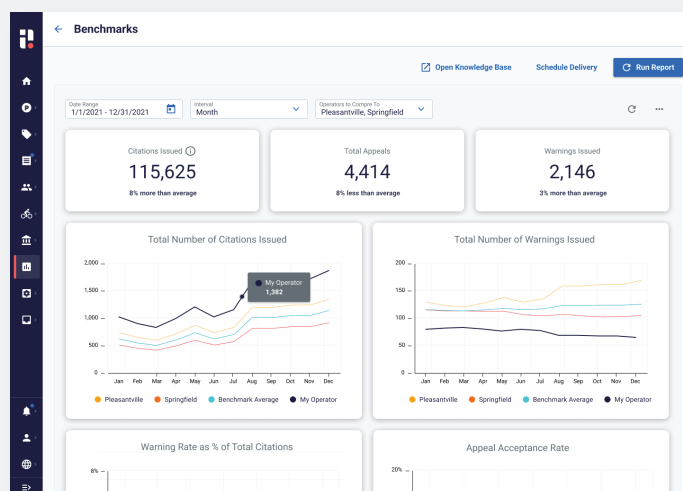
## How it Works



Explore and identify cities that have a similar parking environment.



Fill out details that include population, attributes, goals, and so much more.



Run reports for insights on specific parameters related to your parking ecosystem.

 **Passport**

 **Analytics**